



**BETTA LIFESTYLES**  
Electrical & Air-Con Solutions

# CAPABILITY STATEMENT





**Geoff Williams**

# about us

**Situated in Rockhampton, BETTA Lifestyles provides quality service in the fields of electrical and data, air conditioning, antennas, smoke alarms, testing and tagging, installation and maintenance.**

Established in 2005, with over 20 years experience, we have an outstanding history of delivering projects and service to both commercial businesses and government departments.

Our key strength lies in the implementation of systems to automate and integrate processes to efficiently deliver services and to comply with contract requirements.

BETTA Lifestyles carries out major maintenance contract works for Australian Defence Force, Coles, One Steel Metal Land, Spotless Group, Ergon Energy, SJ Electrics and major Real Estate Franchises. We carry out work for all these clients plus many more across Central Queensland.

We have a dedicated team of 20 staff, who carry out all aspects of our services backed with a modern fleet of fully equipped and stocked vehicles.

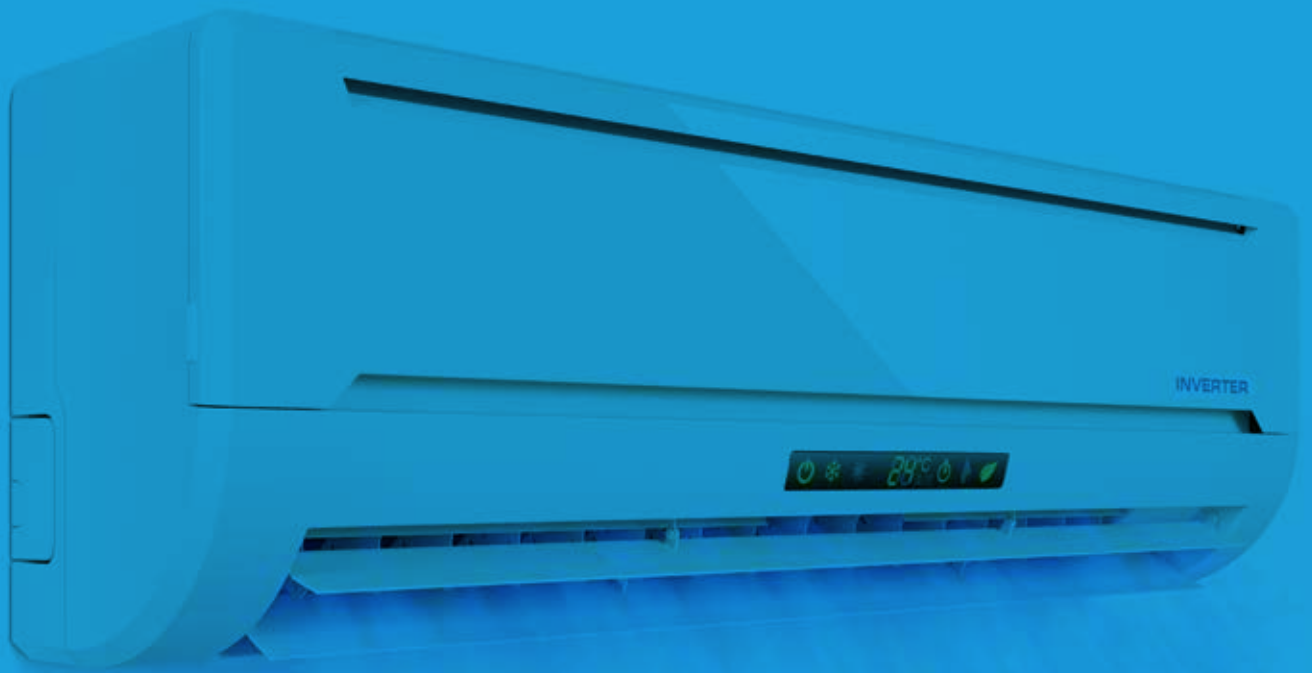
## **GEOGRAPHICAL COVERAGE**

Coverage to the Central Queensland area including Rockhampton, Yeppoon, Emu Park, Mount Larcom, Gladstone, Biloela, Moura, Blackwater, Emerald and their surrounding areas. We are also able to accommodate work in other areas by consultation.

## **Our Principle Activities are:**

- Demand maintenance
- Periodic/routine maintenance
- Retail Installations
- Commercial installations
- Industrial Installations
- Air conditioning
- Testing & Tagging Inspection Services





# our values

## **SAFETY** Securing our Success

We believe in providing a safe and secure working environment, free of incidents, accidents, and unsafe acts. We will live by our standards, the highest standards.

## **ETHICS AND INTEGRITY** Ensuring our Success

We believe in operating with the upmost integrity, where the law is not only upheld but respected, and promises made are promises kept.

## **RESPECT** Retaining those Responsible for our Success

We believe in recruiting, rewarding and retaining the best, understanding the value of diversity, and providing opportunity through training and developing.

## **PERFORMANCE** Measuring our Success

We believe striving for maximum return on investment and best-in-class results by continually attaining our goals.

## **TEAMWORK** Empowering our Success

We believe we are strongest when we are united and working together to achieve our mission.

## **COMMUNITY** Sharing our Success

We believe in respecting our environment and promoting value to our communities by encouraging volunteerism and active participation.

# our capabilities

**SAM HILL  
SUBMERSIBLE PUMPS PROJECT**  
14th December 2016

Disconnect and remove existing sewerage pumps at the North and South Camp of Sam Hill by entering the confined space sewerage well. Supply, connect, install and commission three new Sewerage pumps.

**PROJECT BREAKDOWN**

Principle: Spotless

BETTA Lifestyles Component \$161,000

Completion Date: 14th December 2016



# our capabilities

## NATURAL WONDERS EARLY LEARNING CENTRE PROJECT 13th October 2015

New daycare centre built including kitchen and play areas. Installation of ducted, cassette and split system air conditioners throughout daycare centre.

### PROJECT BREAKDOWN

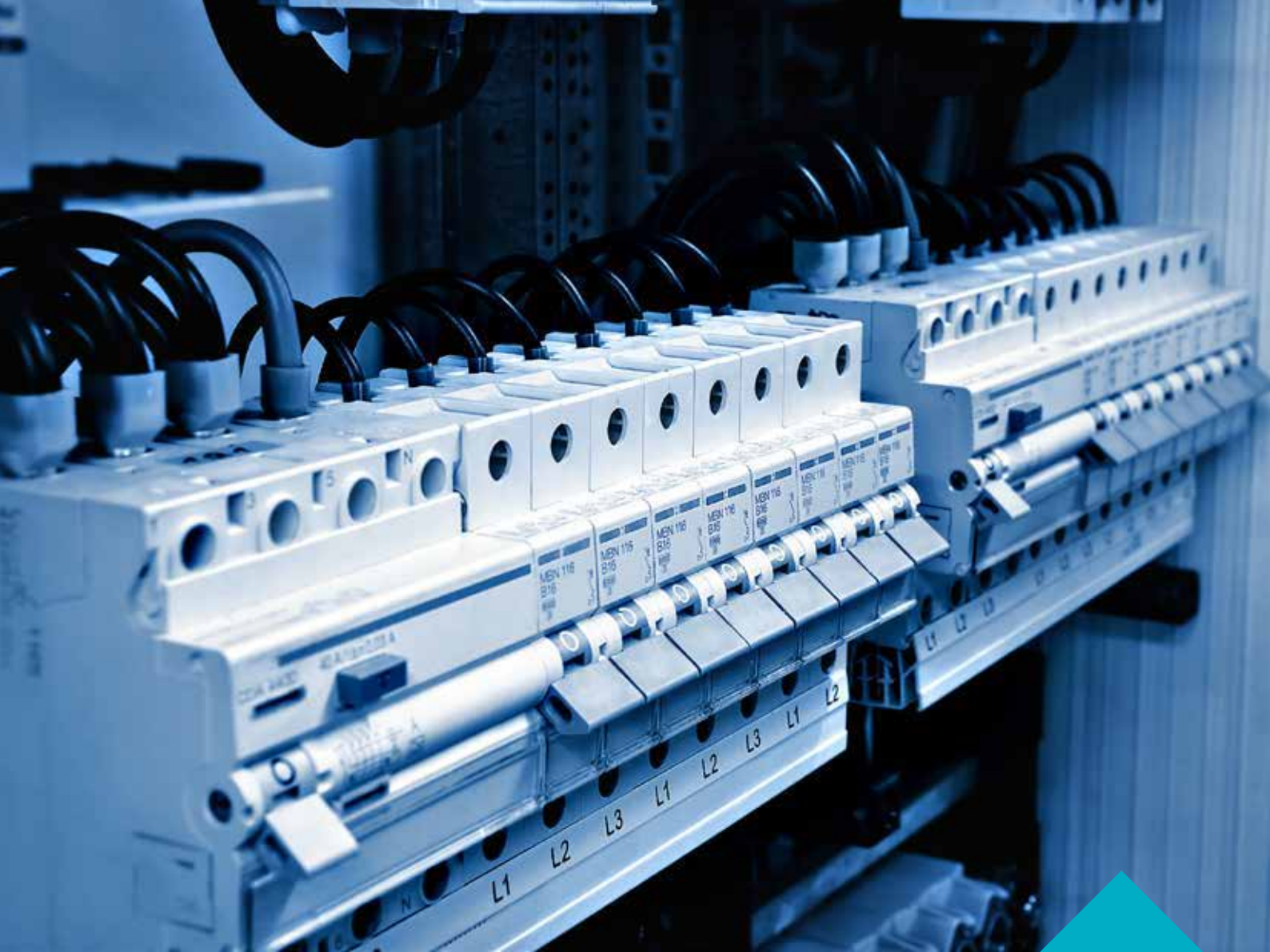
Principle: Morrison Constructions

BETTA Lifestyles Component \$181,654

Completion Date: 13th October 2016







## OFFICEWORKS GLADSTONE PROJECT 31st August 2016

New Officeworks store opened in Gladstone. Changes were made to existing shop to accommodate Officeworks. Works included supply and install of a new 72 pole switchboard, install new power points and data outlets throughout the store. Supply and Install new emergency and exit lighting with a test switch.

### PROJECT BREAKDOWN

Principle: SJ Electrics

BETTA Lifestyles Component: \$40,000

Completion Date: 31st August 2016

# our capabilities

“ We carry out major installation and maintenance contract works for a number of predominant Queensland commercial and government customers. In order to deliver projects like these, our approach focuses and delivers on high quality, visibility and meeting compliance and standards. This is achieved through our vast industry knowledge, highly skilled workforce and fully equipped fleet. ”

# our operational approach

**Our focus is to create and strengthen customer relationships while delivering work on time and cost. We aim to provide this through:**

- Delivery of reliable quality service to our customers
- Providing 100% visibility of work and compliance information in real time
- Being oncall 24/7
- Deliver of real time reporting on OH&S and Environmental & Quality compliance
- Efficiently and effectively meeting contract requirements



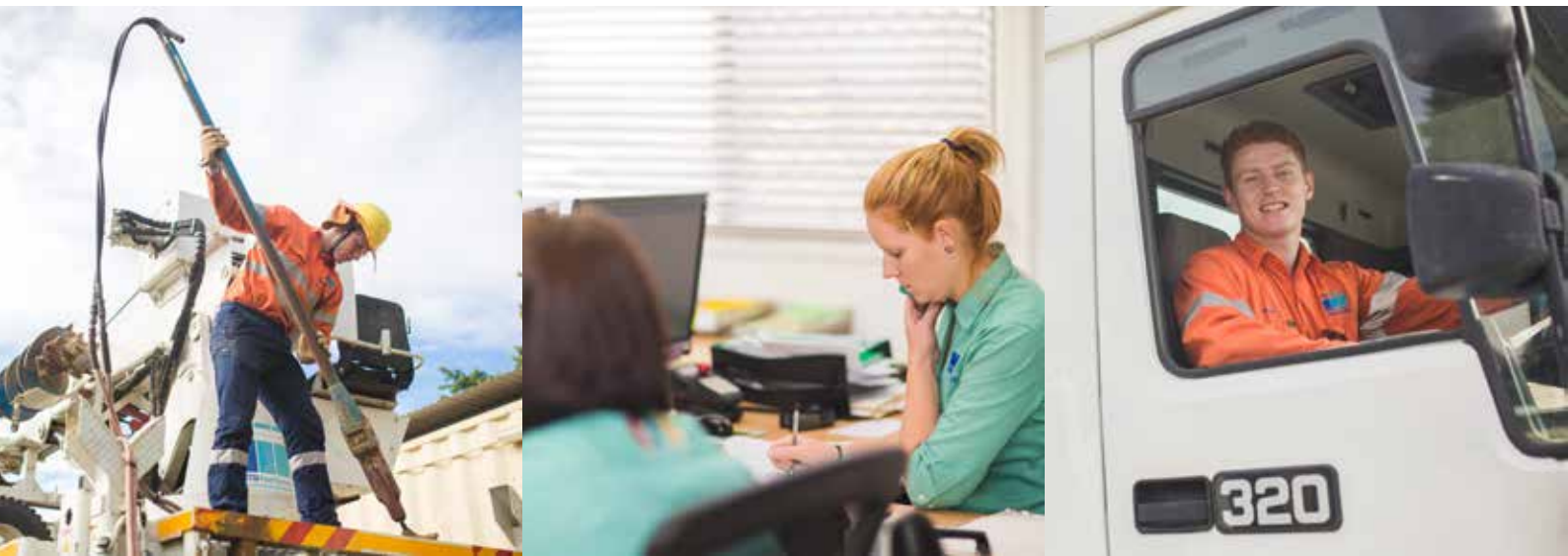


Accreditations & Certifications

ACCREDITATIONS		
SAI Global	AS 4801	Safety Management Plan
SAI Global	ISO 9001	Quality Management Plan
SAI Global	ISO 14001	Environmental Management Plan
CERTIFICATIONS		
Electrical Contractors Licence	#65701	Exp 01/05/2021
Refrigerant Trading Authorisation Certificate	#AU10949	Exp 23/03/2021
AFFILIATIONS		
Master Electricians Australia Member		



Some of our Customers





**bettalifestyles.com.au**

**T: 07 4921 0522**

240 Lion Creek Rd, West Rockhampton QLD 4700  
Postal Address: PO BOX 8498 Allenstown QLD 4700

**E: [sales@bettalifestyles.com.au](mailto:sales@bettalifestyles.com.au)**

**F: 07 4921 0572**

**ABN 63 113 128 671**